

## CERAMIC MATERIALS - TECHNICAL DATA SHEET

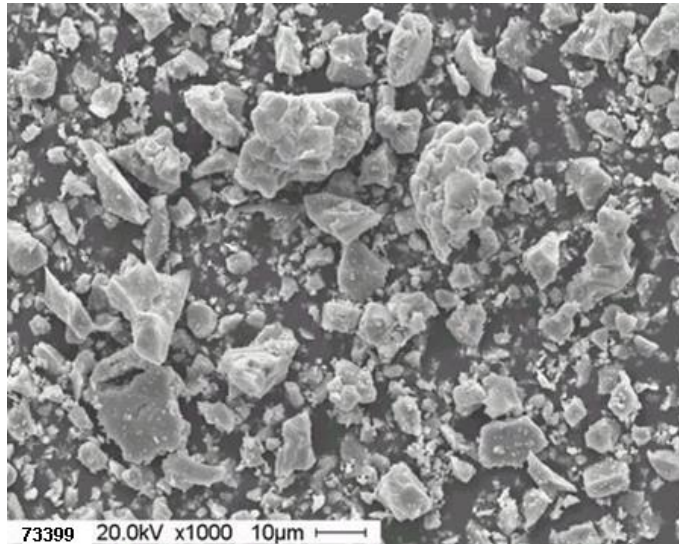
### FERRITES

Ferrite Loading Powder 73399 is a small average particle manganese-zinc (MnZn) ferrite compatible for loading into various resin systems for EMI absorption. Custom variations can be produced - including changes in chemistry and particle size distribution.

Applications include, but are not limited to, noise suppression for automotive ignition cable, inductive filters, microwave heating, and magnetic susceptibility for detection.

The powder loading densities, distribution and thickness of the product have a significant affect on the amount of attenuation.

### EXAMPLE



### PHYSICAL PROPERTIES

Characteristic	Unit	Specifications	Typical Value
Average Particle Size, MV	Microns	9.0 – 13.0	11.1
d10		-	2.0
d50		-	5.7
d90		-	28.3
Moment Saturation ( $M_s$ )	EMU/g	80.0 ± 5.0	79.0
Surface Area (BET)	m <sup>2</sup> /g	1.5 ± 0.3	1.3
Moisture	%	≤ 0.2%	0.1
Wet Sieve +325 mesh	%	3.0 max	0.7
Tap Density	g/cc	2.2 ± 0.5	2.3
True Density	g/cc	-	5.1
Curie Temp	°C	-	205



## CERAMIC MATERIALS - TECHNICAL DATA SHEET

### SAMMS® ADSORBENT (for U.S. Government Use Only)

SAMMS® is a molecularly engineered material to absorb CO<sub>2</sub> within seconds.

High surface area combined with the attached functional group gives SAMMS® adsorbent rapid kinetics and high capacity for absorbing CO<sub>2</sub>.

SAMMS® is baseline material for submarine life support systems for removal of Carbon Dioxide.

Advantages:

- More affordable
- Safer
- No unpleasant odors
- Non-corrosive

### SPECIALTY CERAMICS

Steward offers custom development of other ceramics such as magnetite, supercapacitor carbon and other ceramic oxides.

Applications include, but are not limited to, industrial, clean energy battery storage, and various catalysts.