

## STAINLESS STEEL MATERIALS - TECHNICAL DATA SHEET

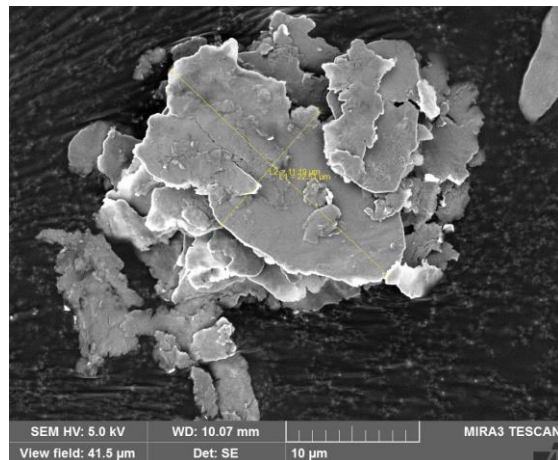
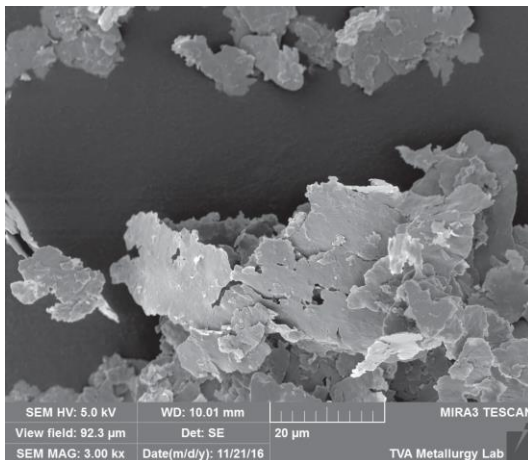
Steward Advanced Materials' 316L stainless steel is specifically designed for corrosion resistant coatings to provide superior protection for metal surfaces.

Applications include, but are not limited to, architectural, automotive, food processing, and other industrial coatings.

### FEATURES

- Can be supplied as a dry powder to allow users to formulate with No to low VOC's
- Can be supplied pre-wetted using compatible solvent to coating formulations
- Particle size can be altered to make the flakes larger or smaller to adjust color

### EXAMPLES



### PHYSICAL PROPERTIES

Characteristic	Unit	Typical Value
MV		17.80
d10	Microns	4.5
d50		14.0
d90		37.0
Moisture		%
Tap Density	g/cc	0.78
True Density	g/cc	7.45

